

Slit Coater

This EQ jets ink from slit shape nozzle and apply uniform film thickness on the surface of the work on the stage.



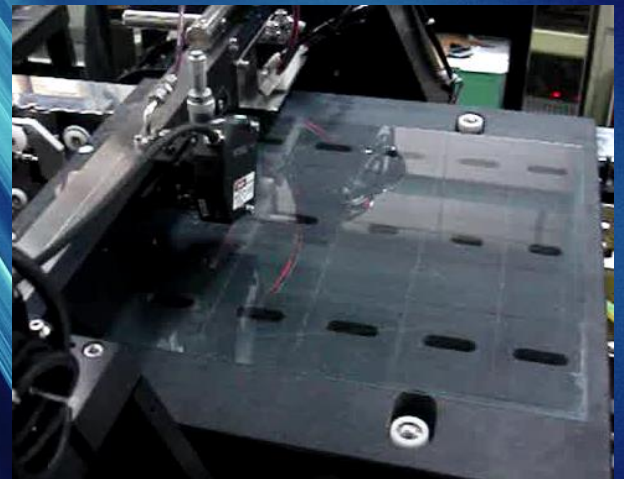
Selectable
Application
method

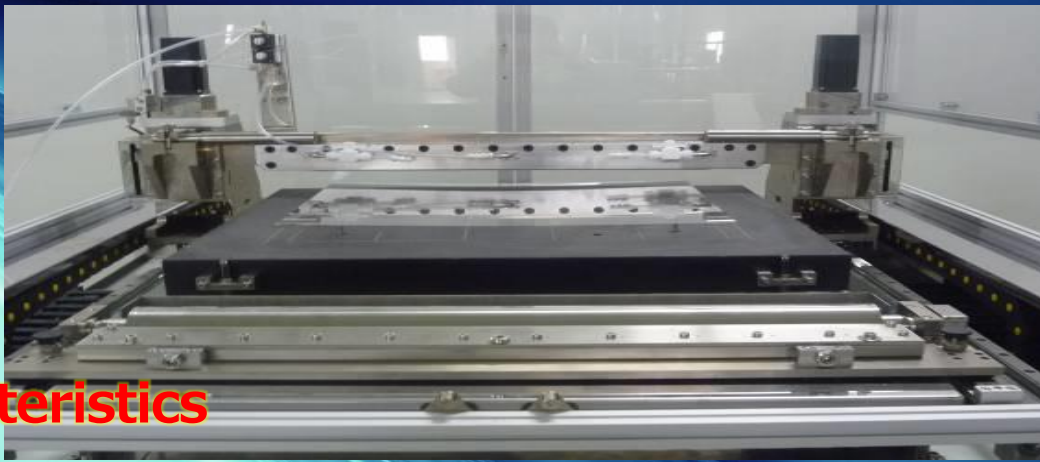
Corresponding
to high viscosity

High speed
Tact

Low cost

<Slit application condition>





Characteristics

- **Corresponding to high viscosity : 1~20,000 (mPa·s)**
 Apply with dedicated pump and piping system
 If thick film thickness is required, can be adjusted with application speed and CIM thickness. (Thin film thickness as well)
- **High speed Tact**
 To reduce Production Tact, application is 300mm/s at most.
 (Viscosity: Less than 4mPa·s)
- **Application method**
 - Air pressurization method
 - RT pump liquid feeding method (Excel at low viscosity)
 - Syringe pump liquid feeding method (Excel at high viscosity)
- **Low cost**
 Meet customer production spec. and EQ spec. and offer low price.

<Demo machine spec.>

| | |
|---|---|
| <p>◆ <u>Viscosity</u></p> <p>Viscosity&Film thickness : 1~20,000 (mPa·s)</p> | <p>◆ <u>Applicable work</u></p> <p>Work : Glass, Film, Metal plate</p> <p>Size : ~450 (L) × ~550 (W)(mm)</p> |
|---|---|

<Application test>

Please prepare following items and contact us from contact address on the right side or our Web site.

- Ink : Viscosity and desired film thickness
- Work : Flowable size with demo machine
- Special note and precaution such as dry conditions

LEAD TECH CO.,LTD.

4-6 Chubu Industrial park, Iwaki-city,
Fukushima, 972-8338,Japan

T E L : 0246-72-2720 FAX:0246-72-2740

<http://www.leadtech.jp>